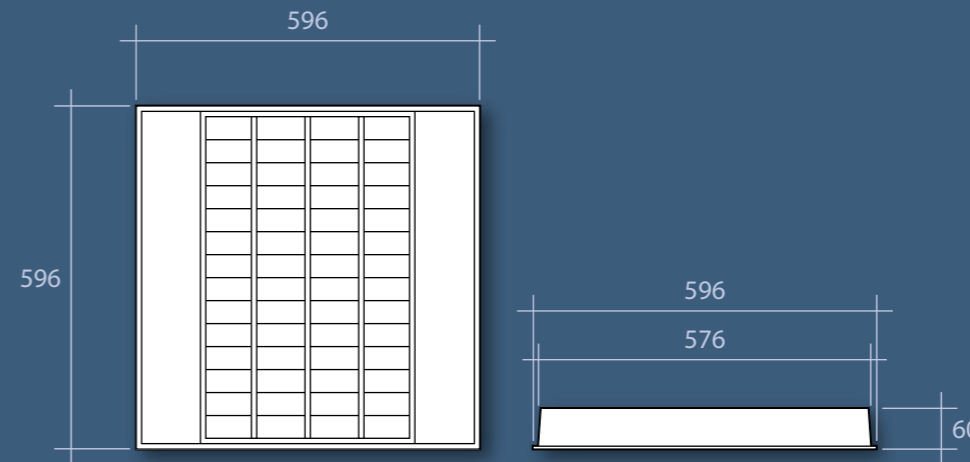
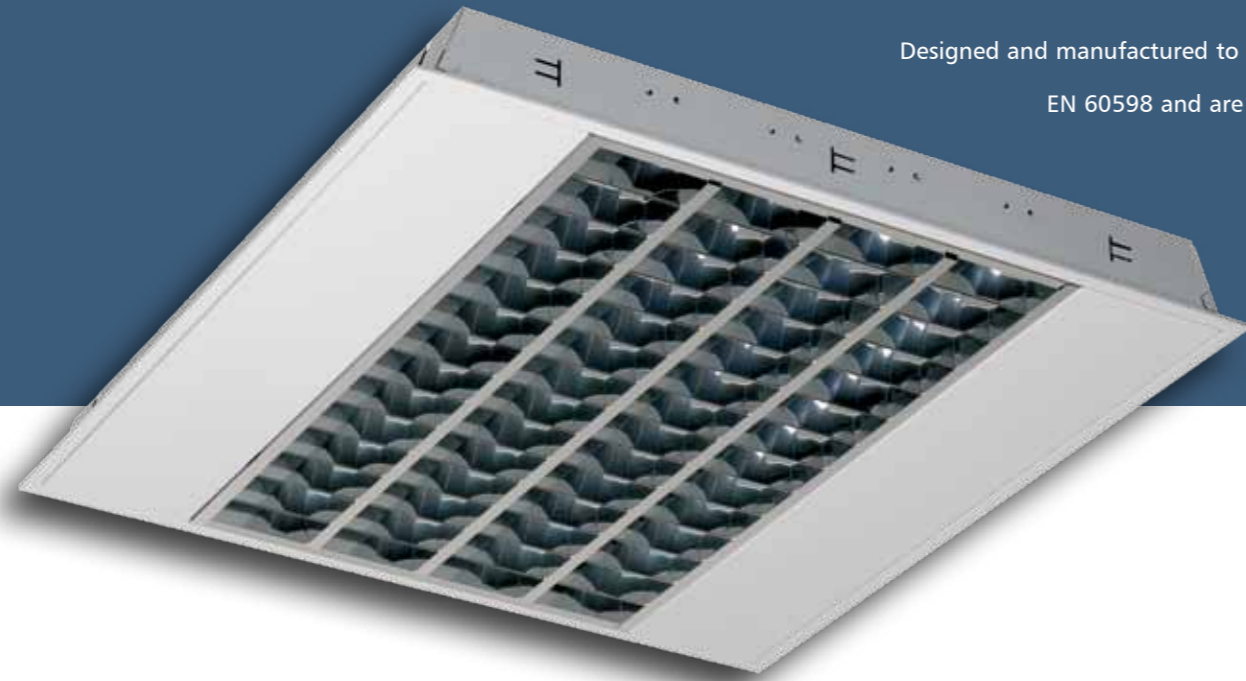


SLIM T5

RECESSED FLUORESCENT LUMINAIRES
For general commercial application

A new generation of high performance recessed fluorescent luminaires incorporating the latest lamp and control gear technology. These high efficiency luminaires are ideally suited to the office environment

Designed and manufactured to comply with EN 60598 and are CE certified.



Lamp Options



T5: 16mm Fluorescent Tube

Standard Features

- High efficiency linear T5 fluorescent lamps
- Slim profile for easy installation into limited ceiling voids
- High frequency control gear
- Suitable for both 15 and 25mm exposed "T" ceiling systems
- Suitable for concealed grid ceiling systems with the use of optional side arm support brackets
- Powder coated white to RAL9010 for a superior finish
- Highly specular anodised louvres held in place with wish bone springs for easy removal
- Louvre fitted with earth lead to ensure earth continuity
- Fabricated on the most modern equipment available to ensure perfect construction

To order Features

(Add suffix to order code)

/HFDDIM: High frequency digital dimming control gear

/E3INT: Integral maintained three hour emergency

/FTB: Fused terminal block

/WSTR/S-CLIP: Set of four side arm support bracket – four required per fitting

Specification Guide

T5 tube

Order Code	Watt	L	W	D	Kg
SLIM314/HF	3 x 14	596	596	60	5.5
SLIM414/HF	4 x 14	596	596	60	5.3

Example order code:

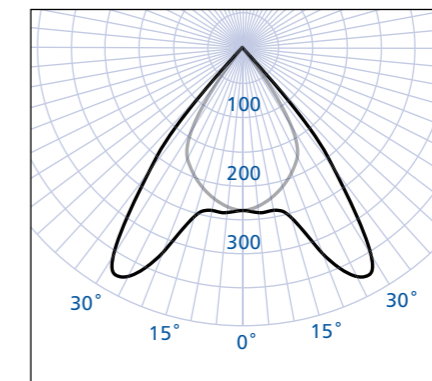
SLIM414/HF/E3INT – A 4 x 14 watt T5 fluorescent recessed luminaire with a highly specular anodised aluminium louvre, high frequency control gear and an integral three hour emergency facility. Supplied without lamp.



Applications:

- Reception areas
- Commercial offices
- Opticians and doctors surgeries
- Meeting rooms
- Retail applications

Photometry



SLIM314/HF