

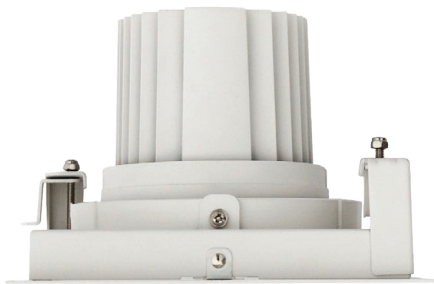


wirefield

SINGLE PROLED50 PHL HP

50,000 hrs
L80/B50

SINGLE
RECESSED
GIMBAL



Technical Specification

- Powder coated die cast aluminium body.
- Recessed mounting.
- 40° faceted aluminium reflector.
- CRI80 and CRI90 option.
- IP20.

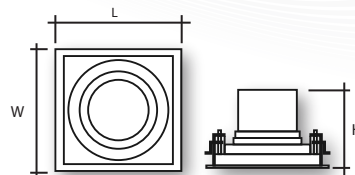
Features

Wattage	18w to 28w
Lumens per Watt	Up to 119
CRI	80+
L**B**	50,000 hours L80 B50
Driver	Fixed Output / Dali / Switch Dim
Colour Temperature	4000k
Temperature Rating	0°C to +35°C

LIGHTING INNOVATION FOR RETAIL APPLICATIONS

Product Specification

Code	Watts	Delivered lumens	CCT	CRI	L x W x H (mm)	Cut Out (mm)	Weight (kg)
PHL1193K80FL	19	2226	3000	80+	175 x 175 x 119	165 x 165	1.4
PHL1283K80FL	28	3002	3000	80+	175 x 175 x 119	165 x 165	1.4
PHL1194K80FL	19	2282	4000	80+	175 x 175 x 119	165 x 165	1.4
PHL1284K80FL	28	3079	4000	80+	175 x 175 x 119	165 x 165	1.4
PHL1193K90FL	18	1839	3000	90+	175 x 175 x 119	165 x 165	1.4
PHL1283K90FL	26	2511	3000	90+	175 x 175 x 119	165 x 165	1.4
PHL1194K90FL	18	1965	4000	90+	175 x 175 x 119	165 x 165	1.4
PHL1284K90FL	26	2684	4000	90+	175 x 175 x 119	165 x 165	1.4



Control Options

Driver Options:

Fixed Output

DALI Driver

Switch Dim

Reflector Options

Additional Options:

24° faceted aluminium reflector

Full photometry and LDT files available on request

Designed & manufactured to comply with EN 60598 and are CE certified

LIGHTING INNOVATION FOR RETAIL APPLICATIONS