

Solent/Mars Anti-Glare Louvre
Part number: WFL/AGL

For accurate control of beam performance or to control light spillage in sensitive applications. Available as a kit for self assembly, fixes directly to the drop down front frame of the floodlight. (White to special order)

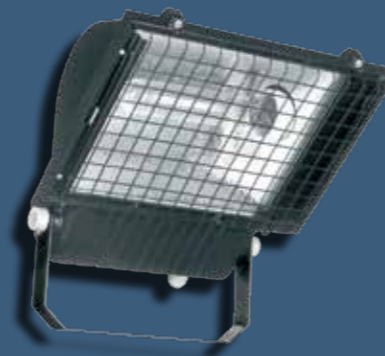
Spare Glass: WFL/GLASS



Solent/Mars Anti-Glare Visor
Part number: WFL/AGV

Reduces light spillage in sensitive applications. Available as a kit for self assembly, fixes directly to the drop down front frame of the floodlight. (White to special order)

Spare Glass: WFL/GLASS



Solent/Mars Wire Guard
number: WFL/WG

For improved vandal resistance. Fixes directly to the drop down front frame of the floodlight. (White to special order)

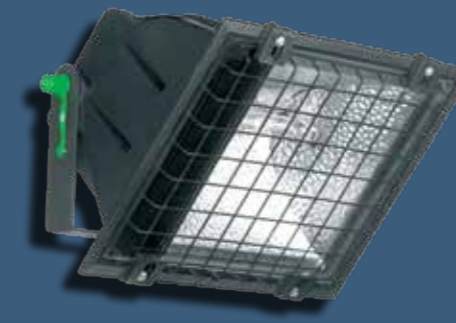
Spare Glass: WFL/GLASS



Solent 1 Wire Guard
Part number: WFL/WG/SOL1

For improved vandal resistance. Fixes directly to the drop down front frame of the floodlight.

Spare Glass: WFL/GLASS/SOL1



Hamble Wire Guard
Part number: WFL/WG/HAM

For improved vandal resistance. Fixes directly to the front of the floodlight.

Spare Glass: WFL/GLASS/HAM



Roma Wire Guard
Part number: WFL/WG/ROMA

For improved vandal resistance. Fixes directly to the front of the floodlight.

Spare Glass: WFL/GLASS/ROMA



1



4



6



7



2



5



8

1 Wall Mounting Bracket for 70/150 watt Floodlight
Part Number: FLBK70/150

- Extra heavy duty – weight 1.6kg
- Corrosion resistant bright zinc plated
- 240 degrees of adjustment
- 140mm stand off
- **Mounting plate 130mm x 160mm x 4mm thick**

2 Corner Mounting Bracket for 70/150 watt Floodlight
Part Number: FLBK70/150/CR

- Extra heavy duty – weight 1.8kg
- Corrosion resistant bright zinc plated
- 240 degrees of adjustment
- 160mm stand off
- Mounting plate 95mm x 160mm (from centre) x 4mm thick

3 Stand Off Wall Mounting Bracket for 70/150 watt Floodlight
Part Number: FLBK70/150/SO

- Extra heavy duty – weight 2.2kg
- Corrosion resistant bright zinc plated
- 240 degrees of adjustment
- 400mm stand off
- Mounting plate 130mm x 160mm x 4mm thick

4 Wall Mounting Bracket for 250/400 watt Floodlight
Part Number: FLBK250/400

- Extra heavy duty – weight 3kg
- Corrosion resistant bright zinc plated
- 360 degrees of adjustment when used with FLSP60
- 300mm stand off
- 60mm spigot
- Mounting plate 200mm x 200mm x 4mm thick

(Special note: Requires FLSP60)

5 Corner Mounting Bracket for 250/400 watt Floodlight
Part Number: FLBK250/400/CR

- Extra heavy duty – weight 4kg
- Corrosion resistant bright zinc plated
- 360 degrees of adjustment when used with FLSP60
- 300mm stand off
- 60mm spigot
- Mounting plate 160mm x 200mm (from centre) x 4mm thick

(Special note: Requires FLSP60)

6 60mm ID Spigot Cap
Part Number: FLSP60

- Extra heavy duty – weight 1.2kg
- Corrosion resistant bright zinc plated
- Pre-drilled for 70/150/250/400 watt floodlights

7 76mm ID Spigot Cap
Part Number: FLSP76

- Extra heavy duty – weight 2kg
- Corrosion resistant bright zinc plated
- Pre-drilled for 70/150/250/400 watt floodlights

8 48mm Horizontal Pole Clamp
Part Number: FLBK/PC

- Extra heavy duty – weight 0.3kg
- Corrosion resistant electro zinc plated
- Pre-drilled for 70/150/250/400 watt floodlights
- Two required per fitting