

VELA IP65

PROFESSIONAL POLYCARBONATE FLOODLIGHT

For special application

High efficiency floodlight with a slim cross sectional profile incorporating either metal halide, high pressure sodium, or mercury discharge lamp with power ratings ranging from

70 to 150 watts. The floodlight is available with either

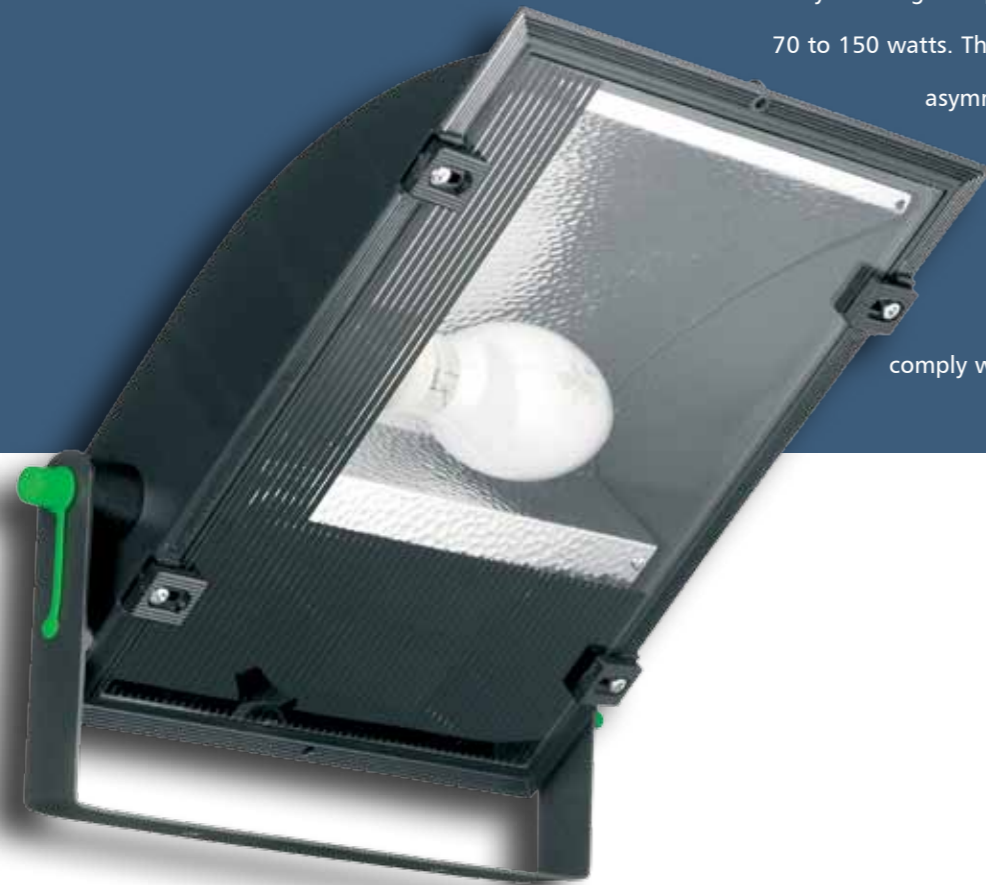
asymmetric or symmetric reflector and a

choice of a polycarbonate or

glass front cover.

Designed and manufactured to

comply with EN 60598 and are CE certified.

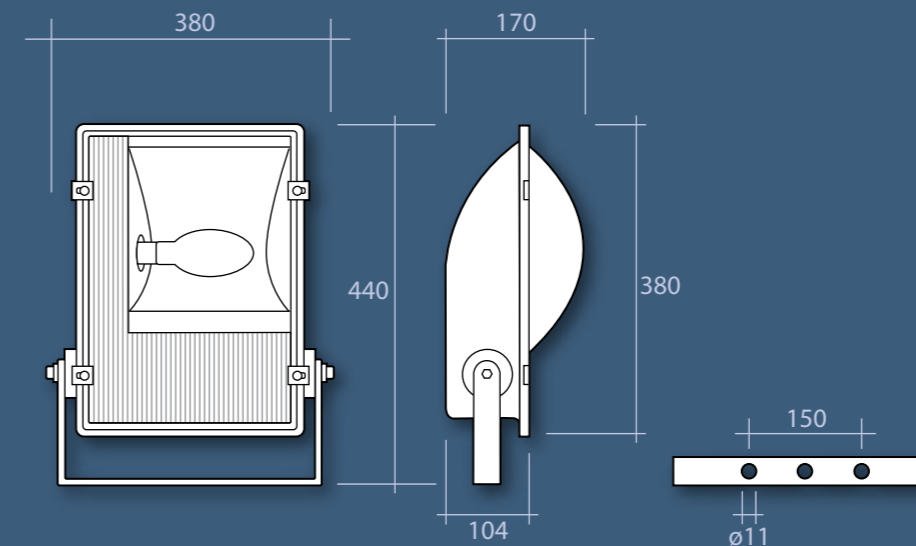


Pictured with glass front option



Applications:

- Car parks
- Environmental floodlighting
- Amenity lighting
- Security lighting
- Feature illumination
- Marine floodlighting
- Food industry



Lamp Options



SI: Elliptical Diffuse High Pressure Sodium with Integral Ignitor



QDE: Linear Metal Halide



M: Elliptical Diffuse Mercury



Q/P: Elliptical Metal Halide – Protected

Standard Features

- Certified ingress protection to IP65
- Choice of metal halide, high pressure sodium or mercury lamp included
- Highly durable UV stabilised impact resistant polycarbonate dished front cover, with toughened glass front option
- Improved resistance to salt water corrosion
- High purity symmetric reflector for improved efficiency, with an asymmetric reflector option
- Quality integral control gear for trouble free use
- Captive fixings and rugged construction for a long service life
- Adjustable stirrup with aiming facility for maximum flexibility in mounting
- All gaskets are manufactured from heat resistant silicone rubber to ensure IP65 rating
- **Windage guide = 0.066m²**

To Order Features

(Add suffix to order code)

/TI: Timed ignitor to prevent lamp cycling

/FTB: Fused terminal block

/PEC: Dusk to dawn sensing photo-electric cell

/AS: Asymmetric reflector

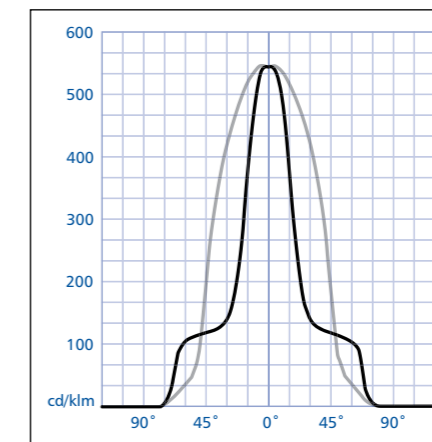
Accessories

/GLASS: Glass front (dished polycarbonate front cover as standard)

For fixing brackets see pages 72/73

Floodlight poles and furniture can be found on pages 108/109

Photometry



WFL150Q/POLY(V)

Specification Guide

Order Code	Watt	Kg	Lamp
WFL70S/POLY(V)	70	3.6	SI
WFL100S/POLY(V)	100	4.0	S
WFL70Q/POLY(V)	70	3.8	Q/P
WFL150Q/POLY(V)	150	4.7	Q/P
WFL80M/POLY(V)	80	3.6	M

Special note: When a glass front is used QDE lamps are fitted.

Example order code:
WFL150Q/POLY(V)/GF/TI/AS/PEC – A 150 watt metal halide floodlight with an IP65 polycarbonate body, glass front, timed ignitor, asymmetric reflector and a photo-electric cell complete with lamp.