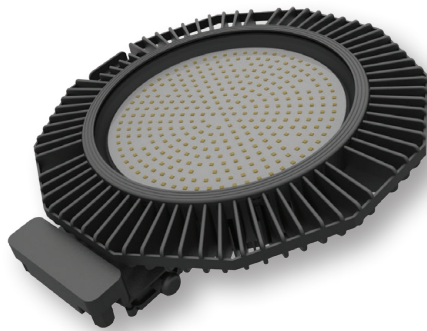




# wirefield ORION

**50,000 hrs**  
**L80/B10**

**HIGHBAY**



Available with On/Off and dimmable sensors



Optional reflector

## Technical Specification

- Slimline die cast aluminium body with low glare diffuser.
- Suspension hook as standard and available with U bracket (supplied separately).
- Nichia branded chips and Meanwell driver.
- IP66.
- IK08.
- Integral emergency available.
- Supplied pre-wired with 1.2m cable.

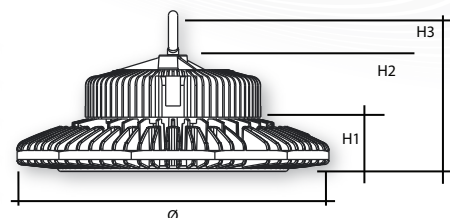
## Features

Wattage	100w to 240w
Lumens per Watt	Up to 143
CRI	80
L**B**	50,000 hours L80 B10
Driver	Fixed Output / Dali / 1-10V
Controls	PIR / Microwave / <b>Eye-Wi</b>
Colour Temperature	5000k
Temperature Rating	-20°C to +35°C (excluding emergency)

**LIGHTING INNOVATION FOR INDUSTRIAL APPLICATIONS**

## Product Specification

Code	Watts	Delivered lumens	H1 / H2 / H3 (mm)	Ø (mm)	Weight (kg)
SHB13500	100	14000	60 / 129 / 178	350	4.5
SHB20250	150	21000	60 / 129 / 178	350	5.0
SHB30000	200	28000	60 / 129 / 178	350	5.5
SHB32400	240	32000	60 / 129 / 178	350	5.5



## Control Options

### Driver Options:

Fixed Output

DALI Driver

1-10v

### Sensor Options:

PIR

Microwave

Eye-Wi

## Accessories

### Optional Accessories:

Polished Aluminium Reflector

U Support Bracket

## Emergency Options

Emergency Options: Note IP20 only

3hr Integral Maintained

3hr Integral Maintained Self Test

3hr Integral Maintained Self Test with Eye-Wi Reporting

Full photometry and LDT files available on request

Designed & manufactured to comply with EN 60598 and are CE certified

*LIGHTING INNOVATION FOR INDUSTRIAL APPLICATIONS*